

# Éducation et marché du travail des jeunes: résultats de l'EJET et des recensements

Philip Merrigan

- Deux études pour la fondation du millénaire
- Labour Outcomes of Graduates and Dropouts of High School and Post-secondary Education: Evidence for Canadian 24- to 26-year-olds in 2005
- **Returns to Education for 21 to 35 year-olds across Canada: Results from the 1991-2006 Canadian Analytic Censuses Files**

# Enquête sur les Jeunes en transition: cycle 4 2005

- 4835 hommes et 4731 femmes de 24 à 26 ans qui ne sont pas à “l'école”.
- Régression de variables représentant le succès sur le marché du travail sur des indicateurs du niveau d'éducation
- Régressions faites séparément pour les hommes et les femmes
- Régressions avec niveau d'éducation
- Régressions avec âge de l'obtention du niveau secondaire

# Statistiques du niveau d'éducation

	Québec		Ontario	
	Female	Male	Female	Male
University graduate	20.4	11.9	25.4	18.7
University continuer	8.1	3.8	7.6	5.7
University	28.2	15.7	33.0	24.4
College graduate	21.0	23.0	23.4	18.0
College continuer	6.8	6.9	4.2	2.9
College	27.8	29.9	27.6	20.9
PSE graduate continuer	10.1	5.9	11.3	14.3
HS	2.2	2.0	3.5	2.9
PSE trade/vocational	10.7	13.3	9.1	11.8
PSE partial-with HS	23.0	21.2	23.9	29.0
PSE				
High-School-other	7.9	15.7	7.7	15.0
High school & other PSE	6.3	5.7	4.6	3.3
High school	14.2	20.9	12.3	18.3
High school dropout	6.6	12.3	3.3	7.5
Total	100	100	100	100
Age youth obtained a high :				
15-19 years	84.3	74.3	88.7	82.6
20-24 years	5.1	7.6	4.0	4.5
Age missing	3.0	3.8	2.7	4.3
No high school diploma	7.6	14.3	4.6	8.7
Observations un-weighted	1,325	1,290	1,763	1,708
Weighted	145,665	150,898	208,245	220,357

# Emploi

Table 4A: Marginal effects of Probit estimations of having a job in December 2005, by level of education and gender

Specification	(1)	(2)	(3)	(4)	(5)	(6)
Sample	Females	Females 6 months	Females 12 months	Males	Males 6 months	Males 12 months
College-graduate	-0.054 <sup>***</sup> (0.02)	-0.040 <sup>*</sup> (0.02)	-0.029 (0.02)	-0.031 (0.02)	-0.024 (0.02)	-0.011 (0.02)
PSE-trade	-0.105 <sup>**</sup> (0.05)	-0.073 (0.05)	-0.079 (0.05)	-0.117 <sup>**</sup> (0.06)	-0.065 (0.05)	-0.073 (0.05)
PSE-part-HS	-0.111 <sup>***</sup> (0.04)	-0.079 <sup>**</sup> (0.04)	-0.075 <sup>**</sup> (0.04)	-0.045 (0.03)	-0.026 (0.03)	-0.024 (0.02)
High School-only	-0.056 (0.04)	-0.010 (0.04)	-0.003 (0.04)	-0.013 (0.03)	0.045 <sup>**</sup> (0.02)	0.020 (0.02)
High-School-other	-0.083 <sup>**</sup> (0.04)	-0.031 (0.03)	-0.049 (0.03)	-0.070 <sup>+</sup> (0.04)	-0.033 (0.03)	-0.020 (0.03)
Dropout	-0.194 <sup>***</sup> (0.07)	-0.091 <sup>+</sup> (0.05)	-0.078 (0.05)	-0.113 <sup>**</sup> (0.05)	-0.064 (0.05)	-0.044 (0.04)

# Aide sociale

Table 5B: Marginal effects of Probit estimations of having received social assistance in 2005 by level of education and gender

Specification	(1)	(2)	(3)	(4)	(5)	(6)
Sample	Females	Female Lower education	Males	Males Lower education	Female Lower education	Males Lower education
College graduate	0.001 (0.01)		0.008 (0.01)			
PSE-trade	0.006 (0.01)	-0.015** (0.01)	-0.002 (0.00)	-0.012**** (0.00)		
PSE-part-HS	0.016+ (0.01)	-0.007 (0.01)	0.025*** (0.02)	-0.006 (0.00)		
High school-only	0.015 (0.02)	-0.011 (0.01)	0.001 (0.01)	-0.011**** (0.00)		
High-School-other	0.024*** (0.01)		0.032*** (0.02)			
Dropout	0.047*** (0.03)	0.014 (0.01)	0.098**** (0.06)	0.021** (0.01)		
HS age 15-19 years					-0.024*** (0.01)	-0.030*** (0.01)
HS age 20-26 years					0.018 (0.02)	-0.005 (0.00)
HS age not stated					0.006 (0.02)	-0.011*** (0.00)

# Revenus de travail annuels

Table 6: Tobit estimations of 2005 annual earnings in dollars by educational levels and gender

Specification	(1)		(2)		(3)		(4)		(5)		(6)	
Sample	Females		Females 6 months		Females 12 months		Males		Males 6 months		Males 12 months	
College-graduate	-4312 <sup>***</sup>	(1109)	-3893 <sup>***</sup>	(1106)	-4697 <sup>***</sup>	(1182)	-5048 <sup>***</sup>	(2055)	-4888 <sup>*</sup>	(1106)	7062 <sup>***</sup>	(2083)
PSE-trade	-10233 <sup>***</sup>	(1549)	-9226 <sup>***</sup>	(1591)	-9669 <sup>***</sup>	(1649)	-7899 <sup>***</sup>	(2858)	-6412 <sup>*</sup>	(1591)	-8345 <sup>***</sup>	(3145)
PSE-part-HS	-9457 <sup>***</sup>	(1348)	-9101 <sup>***</sup>	(1330)	-9325 <sup>***</sup>	(1420)	-10446 <sup>***</sup>	(2074)	-9463 <sup>***</sup>	(1330)	-11366 <sup>***</sup>	(2257)
High-School-other	-10430 <sup>***</sup>	(1611)	-9151 <sup>***</sup>	(1609)	-8864 <sup>***</sup>	(1689)	-11518 <sup>***</sup>	(2400)	-9750 <sup>***</sup>	(1609)	-11437 <sup>***</sup>	(2404)
Dropout	-13890 <sup>***</sup>	(2322)	-11310 <sup>***</sup>	(2058)	-10861 <sup>***</sup>	(2119)	-16027 <sup>***</sup>	(2776)	-14209 <sup>***</sup>	(2058)	-15915 <sup>***</sup>	(2853)

Table 7: Tobit estimations of 2005 annual earnings in dollars by lower education levels and gender

Specification	(1)		(2)		(3)		(4)		(5)		(6)	
Sample	Females 12 months		Females 6 months		Female 12 months		Males 12 months		Males 6 months		Males 12 months	
PSE-part-trade			-6944	(1411)	-521	(1484)			4604 <sup>†</sup>	(2350)	4580 <sup>†</sup>	(2552)
PSE-part-HS			-172	(1196)	-784	(1240)			1248	(1663)	612	(1726)
Dropout			-3003 <sup>†</sup>	(1675)	-1937	(1619)			-3965 <sup>†</sup>	(1858)	-4064 <sup>†</sup>	(1915)
HS age 15-19 years	1597	(1415)					5178 <sup>**</sup>	(1967)				
HS age 20-26 years	5071	(3424)					-1960	(2321)				
HS age not stated	-1334	(2686)					3922	(2521)				

# Formation Professionnelle

Table 11: Marginal effects of Probit estimations of employer or career or total training by level of education and gender

Specification	(1)		(2)		(3)		(4)		(5)		(6)	
Sample	Female Employer		Male Employer		Female Career		Male Career		Female both training		Male both training	
College graduate	-0.045	(0.04)	0.009	(0.04)	-0.026	(0.02)	-0.006	(0.03)	-0.074 <sup>†</sup>	(0.04)	-0.019	(0.05)
PSE-trade	-0.111 <sup>**</sup>	(0.06)	-0.006	(0.07)	-0.048 <sup>**</sup>	(0.02)	-0.072 <sup>****</sup>	(0.02)	-0.135 <sup>**</sup>	(0.06)	-0.075	(0.07)
PSE-part-HS	-0.093 <sup>†</sup>	(0.05)	0.021	(0.05)	-0.050 <sup>**</sup>	(0.02)	-0.013	(0.03)	-0.101 <sup>†</sup>	(0.05)	0.005	(0.05)
High-School-other	-0.164 <sup>***</sup>	(0.06)	-0.010	(0.06)	-0.062 <sup>**</sup>	(0.03)	-0.019	(0.03)	-0.186 <sup>***</sup>	(0.06)	-0.044	(0.06)
Dropout	-0.121 <sup>†</sup>	(0.07)	-0.035	(0.07)	-0.066 <sup>**</sup>	(0.03)	-0.024	(0.04)	-0.188 <sup>***</sup>	(0.07)	-0.072	(0.07)



# Recensement: 21 à 35 ans

Table A3: Education levels by gender and census - youth aged 21 to 35 years, all provinces<sup>1</sup>

Education levels	All Females							
	1991		1996		2001		2006	
1. Some High School	148,470	20.8	116,020	16.8	82,020	13.4	61,250	9.7
2. Trade/Apprenticeship	89,365	12.4	79,010	11.4	67,940	11.1	47,450	7.5
3. High School Diploma	211,500	29.7	188,130	27.2	151,935	24.7	154,190	24.4
4. College/CEGEP	141,855	19.9	158,120	22.9	144,730	23.6	153,830	24.3
5. Below Bachelor	14,270	2.0	16,380	2.4	17,290	2.8	31,020	4.9
6. Bachelor's degree	83,835	11.8	104,030	15.1	115,130	18.7	136,220	21.5
7. Certificate above Bachelor	10,035	1.4	11,830	1.7	13,820	2.3	17,810	2.8
8. Medical degree	2,570	0.4	2,850	0.4	3,455	0.6	3,915	0.6
9. Master's degree	10,410	1.5	13,760	2.0	17,060	2.8	24,870	3.9
10. Earned Doctorate	740	0.1	950	0.1	1,250	0.2	2,220	0.4
Total	713,050	100	691,100	100	614,640	100	632,770	100
	All Males							
1. Some High School	172,840	24.3	142,080	20.9	105,160	17.6	82,350	13.4
2. Trade/Apprenticeship	129,280	18.2	110,150	16.2	84,190	15.8	74,210	12.1
3. High School Diploma	195,230	27.4	189,590	27.9	167,170	27.9	120,990	19.8
4. College/CEGEP	99,090	14.5	110,860	16.3	103,920	17.4	179,660	29.3
5. Below Bachelor	10,520	1.5	12,750	1.9	12,410	2.1	24,470	4.0
6. Bachelor's degree	77,360	10.9	85,340	12.6	85,710	14.3	94,350	15.4
7. Certificate above Bachelor	7,400	1.0	8,200	1.2	8,865	1.5	10,580	1.7
8. Medical degree	3,640	0.5	3,390	0.5	3,140	0.5	2,860	0.5
9. Master's degree	13,810	1.9	15,080	2.2	16,185	2.7	20,360	3.3
10. Earned Doctorate	1,800	0.3	2,230	0.3	2,140	0.4	2,810	0.5
Total	710,960	100	691,100	100	598,900	100	612,630	100





Table 1: OLS estimations of log of weekly wages by gender and census, 1991-2006

Census year	1990		1995		2000		2005	
Gender	Males	Females	Males	Females	Males	Females	Males	Females
Some High School	-0.116 <sup>***</sup> (0.00)	-0.173 <sup>***</sup> (0.00)	-0.107 <sup>***</sup> (0.00)	-0.155 <sup>***</sup> (0.00)	-0.109 <sup>***</sup> (0.00)	-0.148 <sup>***</sup> (0.01)	-0.153 <sup>***</sup> (0.00)	-0.226 <sup>***</sup> (0.01)
Trade/Apprenticeship	0.0847 <sup>***</sup> (0.00)	-0.010 <sup>**</sup> (0.00)	0.099 <sup>***</sup> (0.00)	-0.011 <sup>*</sup> (0.00)	0.125 <sup>***</sup> (0.00)	0.0208 <sup>***</sup> (0.00)	0.177 <sup>***</sup> (0.00)	0.017 <sup>**</sup> (0.01)
College	0.189 <sup>***</sup> (0.00)	0.194 <sup>***</sup> (0.00)	0.193 <sup>***</sup> (0.00)	0.199 <sup>***</sup> (0.00)	0.212 <sup>***</sup> (0.00)	0.191 <sup>***</sup> (0.00)	0.242 <sup>***</sup> (0.00)	0.238 <sup>***</sup> (0.00)
Below Bachelor	0.226 <sup>***</sup> (0.01)	0.320 <sup>***</sup> (0.01)	0.226 <sup>***</sup> (0.01)	0.346 <sup>***</sup> (0.01)	0.265 <sup>***</sup> (0.01)	0.308 <sup>***</sup> (0.01)	0.342 <sup>***</sup> (0.01)	0.413 <sup>***</sup> (0.01)
Bachelor	0.396 <sup>***</sup> (0.00)	0.479 <sup>***</sup> (0.00)	0.433 <sup>***</sup> (0.00)	0.508 <sup>***</sup> (0.00)	0.493 <sup>***</sup> (0.00)	0.528 <sup>***</sup> (0.00)	0.548 <sup>***</sup> (0.00)	0.651 <sup>***</sup> (0.00)
Above Bachelor	0.458 <sup>***</sup> (0.01)	0.568 <sup>***</sup> (0.01)	0.470 <sup>***</sup> (0.01)	0.575 <sup>***</sup> (0.01)	0.519 <sup>***</sup> (0.01)	0.576 <sup>***</sup> (0.01)	0.625 <sup>***</sup> (0.01)	0.731 <sup>***</sup> (0.01)
Medical	0.819 <sup>***</sup> (0.03)	0.874 <sup>***</sup> (0.03)	0.967 <sup>***</sup> (0.03)	1.001 <sup>***</sup> (0.03)	0.896 <sup>***</sup> (0.03)	0.943 <sup>***</sup> (0.02)	0.853 <sup>***</sup> (0.03)	0.948 <sup>***</sup> (0.03)
Master	0.576 <sup>***</sup> (0.01)	0.656 <sup>***</sup> (0.01)	0.634 <sup>***</sup> (0.01)	0.739 <sup>***</sup> (0.01)	0.705 <sup>***</sup> (0.01)	0.728 <sup>***</sup> (0.01)	0.771 <sup>***</sup> (0.01)	0.866 <sup>***</sup> (0.01)
Doctorate	0.680 <sup>***</sup> (0.02)	0.794 <sup>***</sup> (0.03)	0.785 <sup>***</sup> (0.02)	0.936 <sup>***</sup> (0.03)	0.813 <sup>***</sup> (0.02)	0.861 <sup>***</sup> (0.03)	0.881 <sup>***</sup> (0.02)	1.015 <sup>***</sup> (0.03)

## Bachelor's Degree

Figure 3.5a: Regression-adjusted Gap in Log Weekly Wages of Males (Relative to High School Graduates)

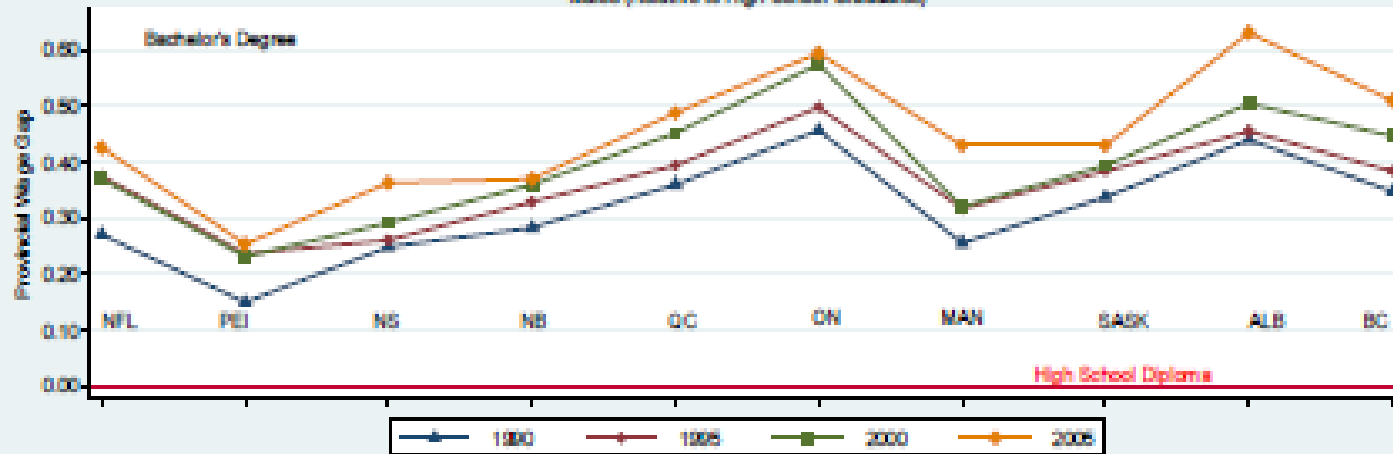
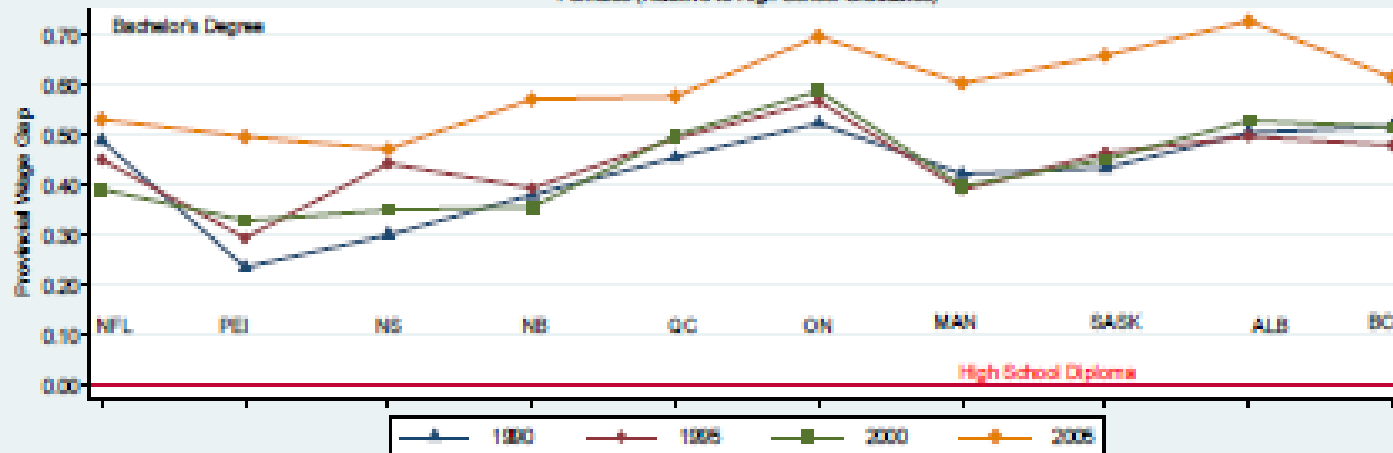


Figure 3.5b: Regression-adjusted Wage Gap in Log Weekly Earnings of Females (Relative to High School Graduates)



# Master's Degree

Figure 3.8a: Regression-adjusted Wage Gap in Log Weekly Earnings of Males (Relative to High School Graduates)

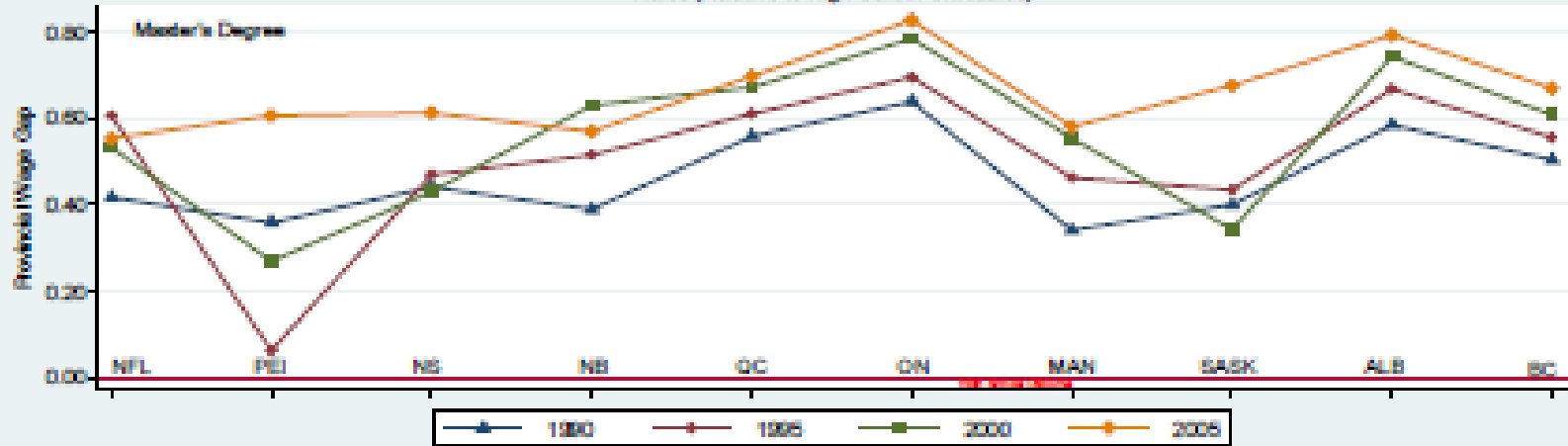


Figure 3.8b: Regression-adjusted Wage Gap in Log Weekly Earnings of Females (Relative to High School Graduates)

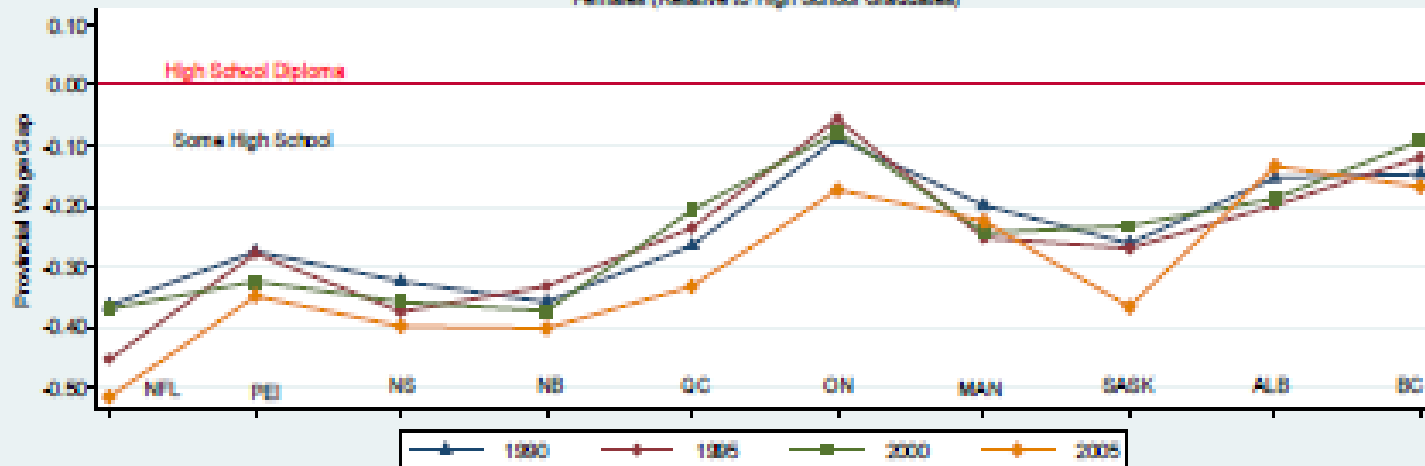


# Some High School

Figure 3.1a: Regression-adjusted Wage Gap in Log Weekly Earnings of Males (Relative to High School Graduates)



Figure 3.1b: Regression Adjusted Wage Gap in Log Weekly Earnings of Females (Relative to High School Graduates)



# Trade Diploma

Figure 3.2a: Regression-adjusted Wage Gap in Log Weekly Earnings of Males (Relative to High School Diploma)

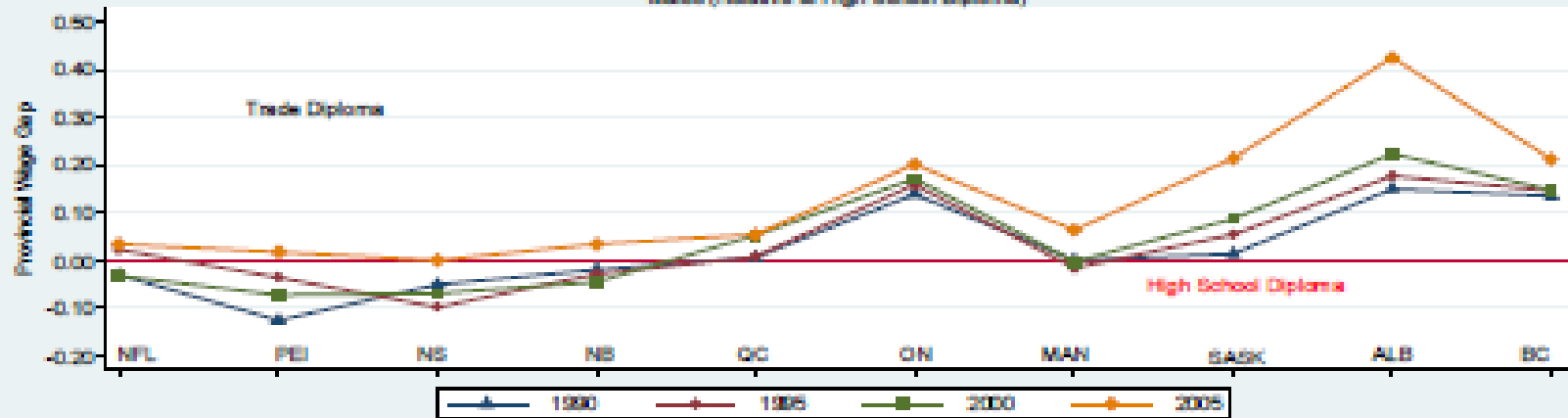
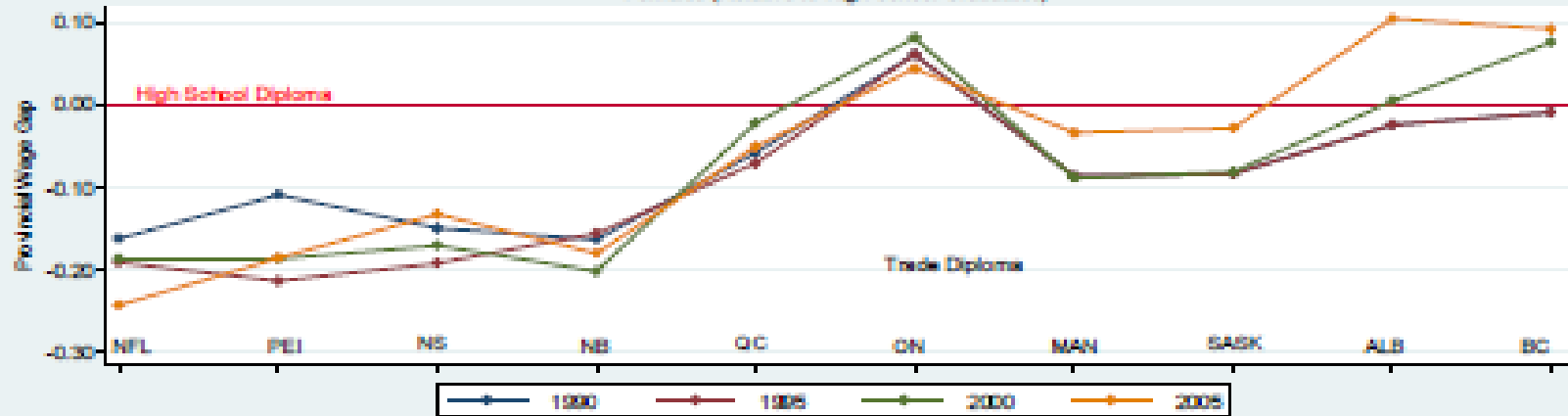


Figure 3.2b: Regression-adjusted Wage Gap in Log Weekly Earnings of Females (Relative to High School Graduates)





# Conclusion

- Écarts hommes-femmes en éducation importants en particulier au Québec.
- Difficilement explicable par les différences entre les rendements de l'éducation.
- Ceux-ci ont augmenté plus rapidement que les hommes depuis 1991.